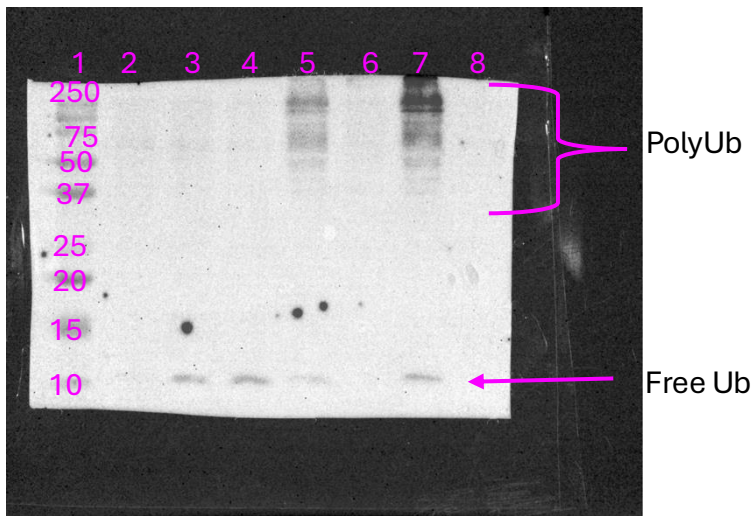
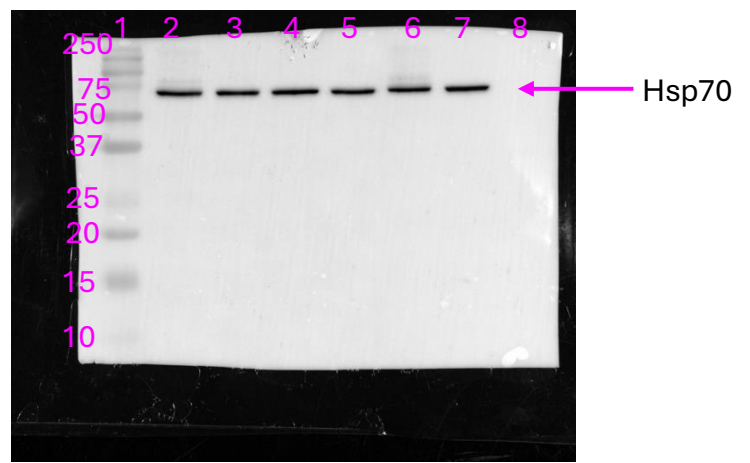


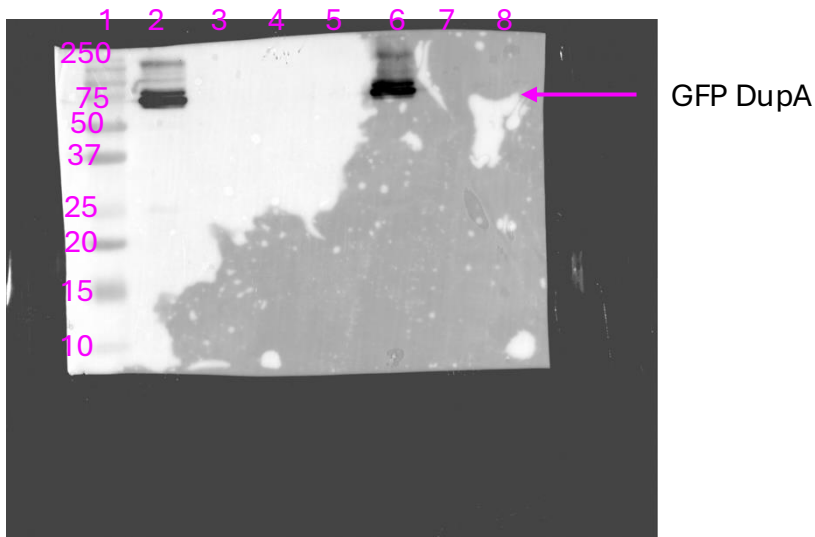
aHA (HA-ubiquitin dGG)



aHsp70



aGFP (GFP-DupA)



Lanes

1. Ladder
2. GFP DupA, uninfected
3. LotC, uninfected
4. Vector, uninfected
5. LotC, WT *L.p.*
6. GFP DupA, WT *L.p.*
7. Vector, WT *L.p.*

**Source data for Figure 6, supplement 1 A.** Western blot analysis of lysates from cells transfected with HA-ubiquitin DGG and the indicated construct (LotC is a canonical ubiquitin ligase effector), and either left uninfected or infected with *L.p.* WT for 1 HR. All blots are merged chemiluminescence and colorimetric images of the Dual Stained Precision Plus ladder (BioRad), ladder label units are kDa.